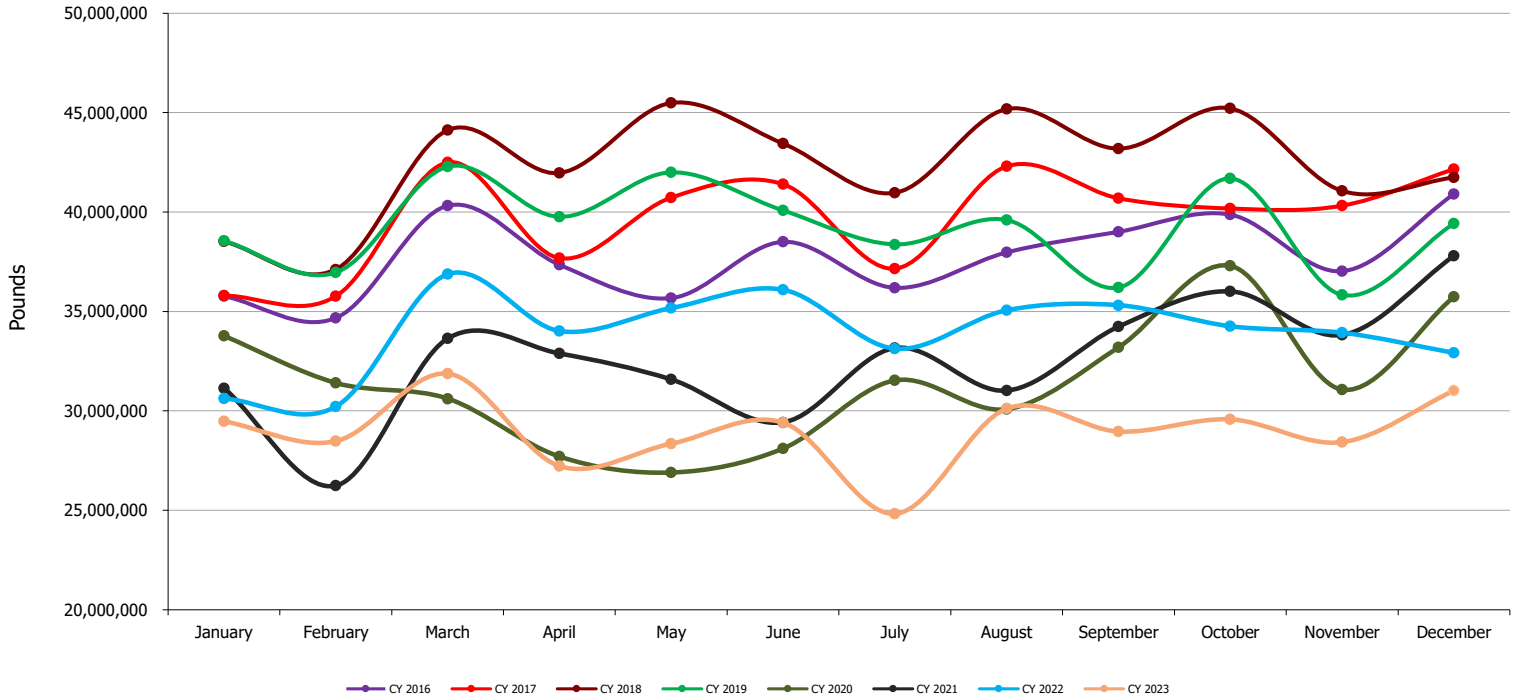




Detroit Metropolitan Airport (DTW) All Cargo by Month (by Calendar Year)

Month	CY 2016	CY 2017	CY 2018	CY 2019	CY 2020	CY 2021	CY 2022	CY 2023
January	35,768,423	35,800,745	38,526,466	38,560,543	33,774,029	31,141,739	30,619,540	29,471,297
February	34,669,592	35,764,180	37,112,258	36,956,055	31,410,326	26,249,029	30,223,164	28,470,885
March	40,323,849	42,498,175	44,126,968	42,286,160	30,610,666	33,642,134	36,872,004	31,881,511
April	37,353,444	37,678,272	41,963,269	39,760,871	27,705,254	32,887,694	34,020,143	27,230,255
May	35,668,509	40,727,213	45,485,208	41,995,285	26,897,157	31,581,273	35,166,650	28,351,923
June	38,500,692	41,403,026	43,445,544	40,075,584	28,110,971	29,419,858	36,096,352	29,408,142
July	36,189,962	37,155,839	40,967,276	38,367,749	31,533,578	33,166,442	33,136,104	24,827,861
August	37,976,981	42,300,232	45,187,776	39,605,227	30,091,768	31,020,745	35,062,534	30,112,834
September	39,008,934	40,699,442	43,185,545	36,200,586	33,196,913	34,234,073	35,309,778	28,961,152
October	39,865,844	40,177,644	45,218,899	41,689,380	37,297,035	36,013,626	34,261,685	29,577,568
November	37,028,391	40,320,190	41,068,999	35,830,379	31,074,655	33,815,768	33,926,719	28,423,154
December	40,904,783	42,159,233	41,740,098	39,428,276	35,729,121	37,800,104	32,925,982	31,021,555
Total	453,259,404	476,684,191	508,028,306	470,756,095	377,431,473	390,972,485	407,620,655	347,738,137

*Please note that 2023 Cargo is subject to change as updates are submitted by Airlines

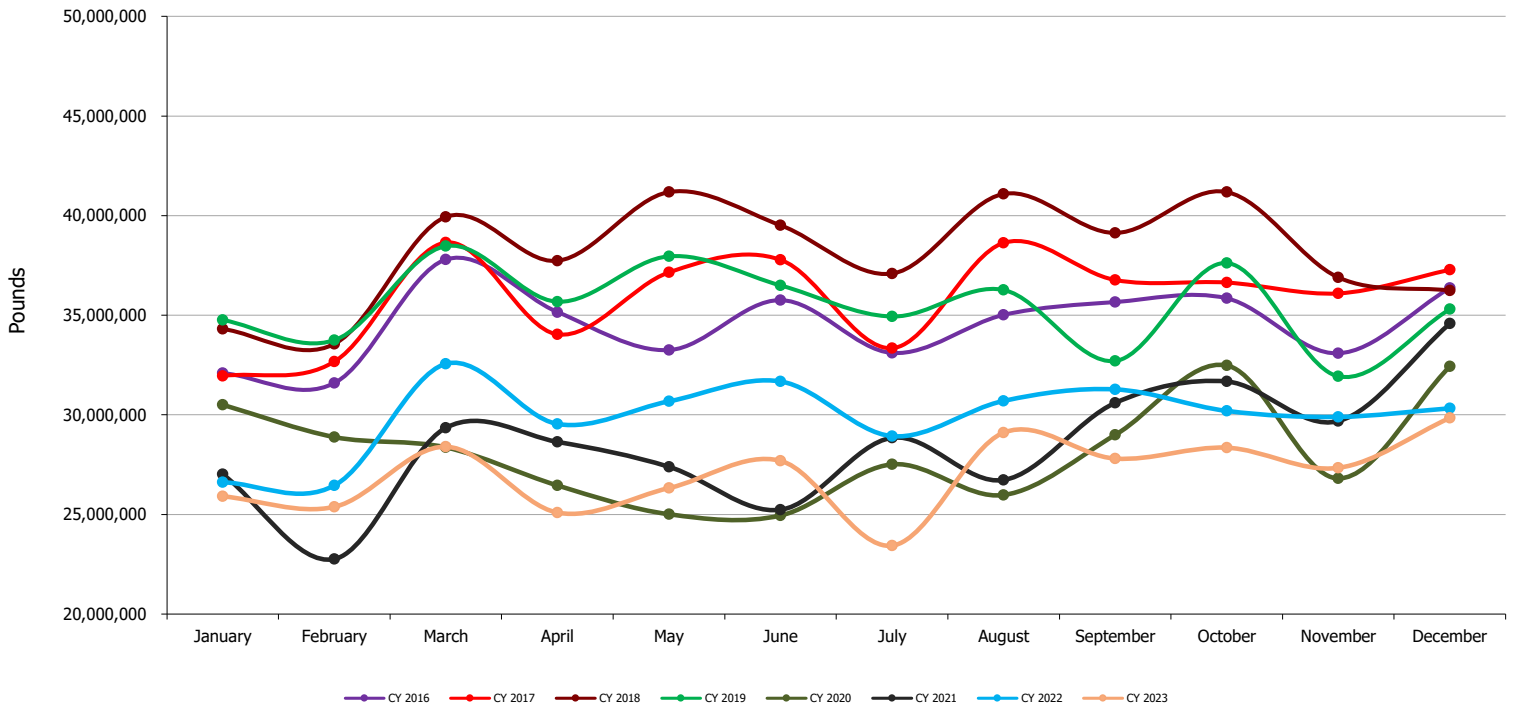




Detroit Metropolitan Airport (DTW) Air Freight By Month (by Calendar Year)

Month	CY 2016	CY 2017	CY 2018	CY 2019	CY 2020	CY 2021	CY 2022	CY 2023
January	32,097,291	31,955,655	34,310,730	34,767,866	30,500,303	27,014,044	26,611,597	25,912,509
February	31,600,530	32,666,953	33,558,441	33,754,639	28,887,735	22,766,089	26,449,849	25,386,922
March	37,795,730	38,655,772	39,941,536	38,473,476	28,361,683	29,340,535	32,556,205	28,403,158
April	35,155,046	34,041,214	37,731,908	35,684,085	26,458,077	28,648,407	29,543,491	25,094,572
May	33,258,287	37,153,693	41,181,383	37,964,943	25,005,707	27,392,778	30,673,625	26,320,274
June	35,759,216	37,783,560	39,518,095	36,501,794	24,950,942	25,238,688	31,671,656	27,685,915
July	33,108,691	33,355,367	37,097,884	34,935,519	27,513,195	28,849,564	28,930,437	23,435,822
August	35,015,609	38,630,589	41,087,571	36,264,040	25,980,300	26,728,304	30,700,767	29,102,264
September	35,664,707	36,766,559	39,123,295	32,705,507	28,991,607	30,597,690	31,281,880	27,797,989
October	35,848,217	36,646,931	41,182,324	37,619,244	32,487,950	31,674,797	30,192,885	28,354,999
November	33,088,414	36,099,753	36,903,768	31,935,661	26,803,870	29,684,878	29,896,512	27,333,207
December	36,369,841	37,279,703	36,242,774	35,305,128	32,432,090	34,589,435	30,332,313	29,842,139
Total	414,761,579	431,035,749	457,879,709	425,911,902	338,373,459	342,525,209	358,841,217	324,669,770

*Please note that 2023 Cargo is subject to change as updates are submitted by Airlines

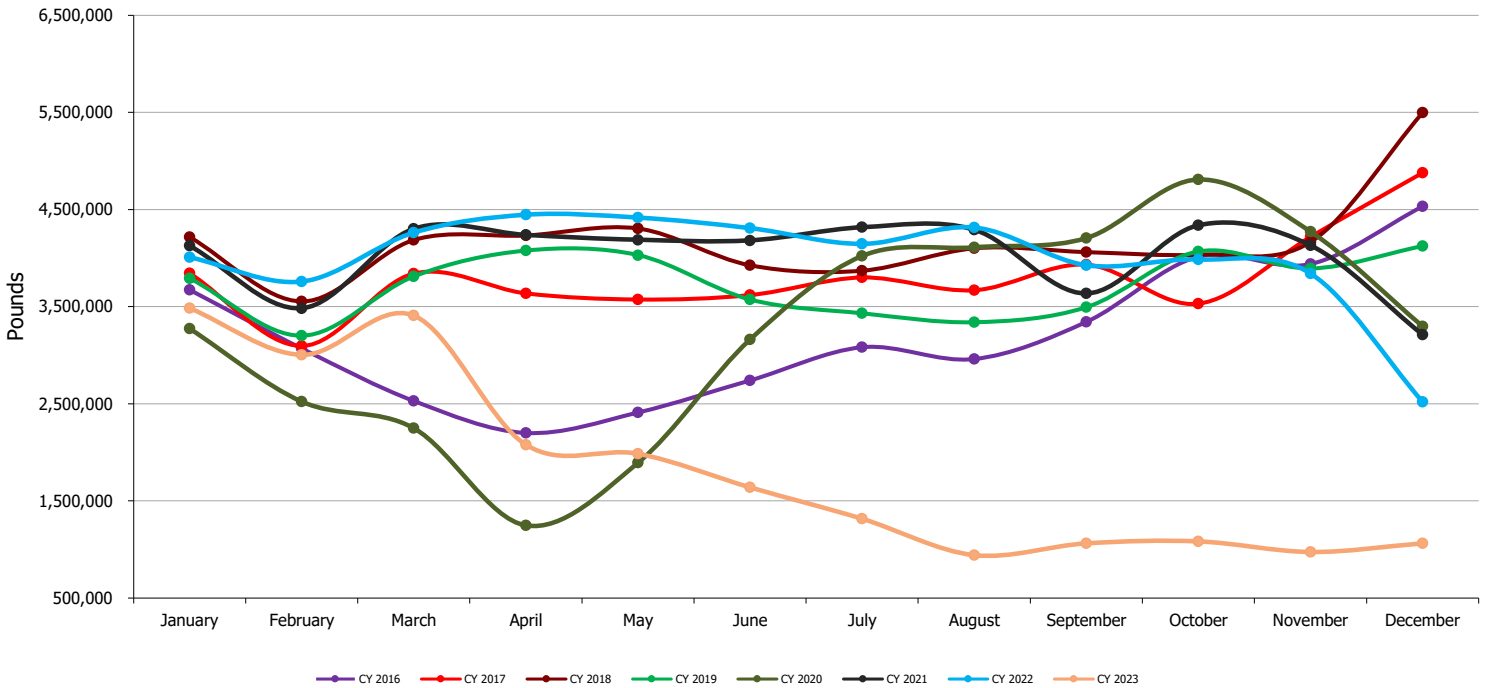




Detroit Metropolitan Airport (DTW) Air Mail by Month (by Calendar Year)

Month	CY 2016	CY 2017	CY 2018	CY 2019	CY 2020	CY 2021	CY 2022	CY 2023
January	3,670,900	3,844,667	4,215,302	3,792,117	3,273,493	4,127,695	4,007,626	3,483,936
February	3,068,871	3,096,463	3,553,470	3,200,953	2,522,384	3,482,718	3,759,364	3,003,867
March	2,527,878	3,841,616	4,184,731	3,812,061	2,248,122	4,301,569	4,263,283	3,407,136
April	2,198,229	3,636,592	4,230,861	4,076,091	1,247,133	4,239,105	4,446,612	2,077,605
May	2,409,954	3,572,675	4,303,507	4,029,559	1,891,450	4,187,712	4,416,780	1,985,932
June	2,741,129	3,619,244	3,927,013	3,572,819	3,160,029	4,181,107	4,309,552	1,637,901
July	3,080,897	3,800,377	3,869,056	3,431,534	4,020,383	4,316,614	4,145,097	1,315,050
August	2,961,116	3,669,188	4,099,666	3,339,934	4,111,468	4,291,786	4,315,215	941,864
September	3,343,002	3,932,281	4,061,829	3,494,048	4,205,274	3,635,998	3,926,602	1,062,258
October	4,014,072	3,530,113	4,035,586	4,069,028	4,808,683	4,338,556	3,985,603	1,082,748
November	3,938,445	4,219,780	4,164,882	3,894,231	4,270,686	4,129,411	3,840,674	974,294
December	4,532,722	4,878,786	5,496,080	4,122,765	3,296,574	3,210,533	2,518,546	1,063,701
Total	38,487,215	45,641,782	50,141,983	44,835,140	39,055,679	48,442,804	47,934,954	22,036,292

*Please note that 2023 Cargo is subject to change as updates are submitted by Airlines





Detroit Metropolitan Airport (DTW) Small Packages by Month (by Calendar Year)

Month	CY 2016	CY 2017	CY 2018	CY 2019	CY 2020	CY 2021	CY 2022	CY 2023
January	232	423	434	560	233	-	317	74,852
February	191	764	347	463	207	222	13,951	80,096
March	241	787	701	623	861	30	52,516	71,217
April	169	466	500	695	44	182	30,040	58,078
May	268	845	318	783	-	783	76,245	45,717
June	347	222	436	971	-	63	115,144	84,326
July	374	95	336	696	-	264	60,570	76,989
August	256	455	539	1,253	-	655	46,552	68,706
September	1,225	602	421	1,031	32	385	101,296	100,905
October	3,555	600	989	1,108	402	273	83,197	139,821
November	1,532	657	349	487	99	1,479	189,533	115,653
December	2,220	744	1,244	383	457	136	75,123	115,715
Total	10,610	6,660	6,614	9,053	2,335	4,472	844,484	1,032,075

*Please note that 2023 Cargo is subject to change as updates are submitted by Airlines
 *As of February 2022, Royal Jordanian began reporting on small packages instead of air freight

