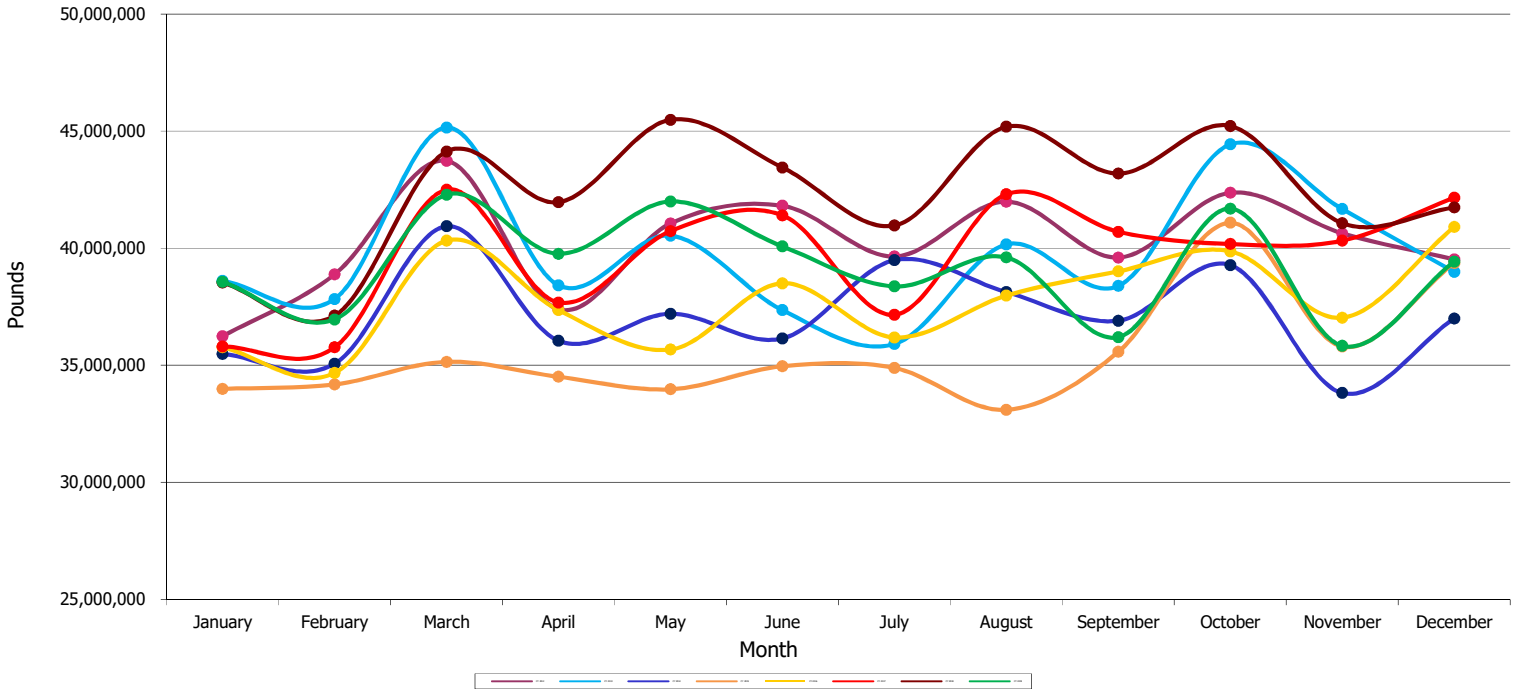


## Detroit Metropolitan Airport (DTW) All Cargo by Month (by Calendar Year)

Month	CY 2012	CY 2013	CY 2014	CY 2015	CY 2016	CY 2017	CY 2018	CY 2019*
January	36,238,935	38,609,312	35,484,480	33,989,100	35,768,423	35,800,745	38,526,466	38,560,543
February	38,881,476	37,830,461	35,065,700	34,179,069	34,669,592	35,764,180	37,112,258	36,956,055
March	43,731,393	45,150,864	40,936,886	35,145,120	40,323,849	42,498,175	44,126,968	42,286,160
April	37,385,958	38,416,570	36,043,756	34,509,772	37,353,444	37,678,272	41,963,269	39,760,871
May	41,053,118	40,535,579	37,199,997	33,973,568	35,668,509	40,727,213	45,485,208	41,995,285
June	41,810,399	37,353,758	36,146,038	34,957,283	38,500,692	41,403,026	43,445,544	40,075,584
July	39,646,175	35,906,722	39,486,728	34,885,455	36,189,962	37,155,839	40,967,276	38,367,749
August	41,987,336	40,161,069	38,124,165	33,097,454	37,976,981	42,300,232	45,187,776	39,605,227
September	39,598,325	38,389,115	36,900,963	35,572,180	39,008,934	40,699,442	43,185,545	36,200,586
October	42,364,431	44,433,872	39,277,347	41,084,182	39,865,844	40,177,644	45,218,899	41,689,380
November	40,633,169	41,673,878	33,815,586	35,800,186	37,028,391	40,320,190	41,068,999	35,830,379
December	39,523,647	38,992,837	36,998,396	39,366,630	40,904,783	42,159,233	41,740,098	39,428,276
<b>Total</b>	<b>482,854,362</b>	<b>477,454,037</b>	<b>445,480,042</b>	<b>426,559,999</b>	<b>453,259,404</b>	<b>476,684,191</b>	<b>508,028,306</b>	<b>470,756,095</b>

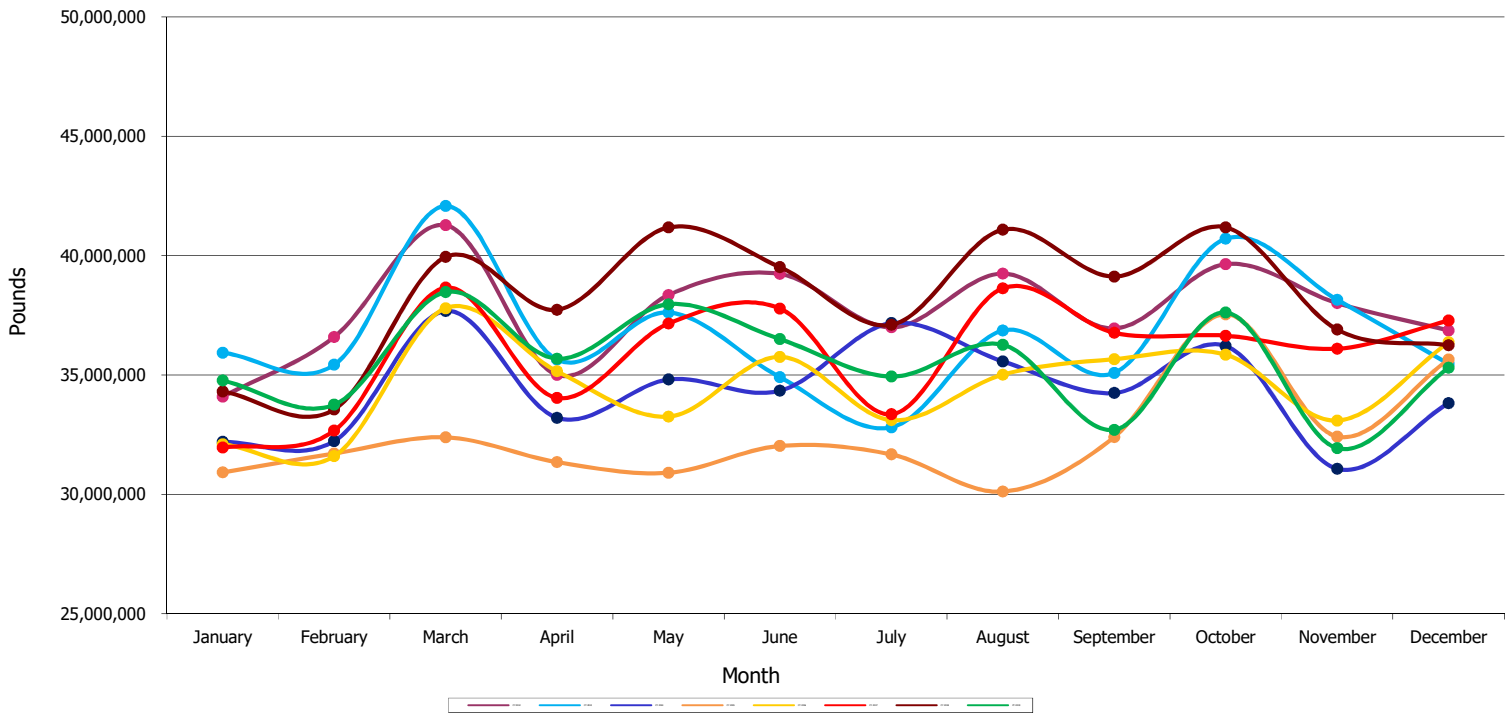
\*Please note that 2019 Cargo is subject to change as updates are submitted by Airlines



## Detroit Metropolitan Airport (DTW) Air Freight By Month (by Calendar Year)

Month	CY 2012	CY 2013	CY 2014	CY 2015	CY 2016	CY 2017	CY 2018	CY 2019*
January	34,086,989	35,931,827	32,199,049	30,919,145	32,097,291	31,955,655	34,310,730	34,767,866
February	36,594,321	35,426,734	32,233,352	31,707,480	31,600,530	32,666,953	33,558,441	33,754,639
March	41,274,453	42,076,926	37,681,514	32,388,589	37,795,730	38,655,772	39,941,536	38,473,476
April	35,000,345	35,645,000	33,205,648	31,353,509	35,155,046	34,041,214	37,731,908	35,684,085
May	38,349,350	37,619,641	34,809,761	30,903,099	33,258,287	37,153,693	41,181,383	37,964,943
June	39,231,565	34,906,764	34,339,864	32,027,298	35,759,216	37,783,560	39,518,095	36,501,794
July	36,993,155	32,810,043	37,174,142	31,671,869	33,108,691	33,355,367	37,097,884	34,935,519
August	39,246,667	36,864,479	35,570,656	30,116,918	35,015,609	38,630,589	41,087,571	36,264,040
September	36,945,763	35,089,612	34,244,325	32,402,870	35,664,707	36,766,559	39,123,295	32,705,507
October	39,643,001	40,709,319	36,213,735	37,544,465	35,848,217	36,646,931	41,182,324	37,619,244
November	38,010,604	38,149,374	31,070,124	32,421,762	33,088,414	36,099,753	36,903,768	31,935,661
December	36,866,860	35,464,242	33,823,844	35,651,378	36,369,841	37,279,703	36,242,774	35,305,128
<b>Total</b>	<b>452,243,073</b>	<b>440,693,961</b>	<b>412,566,014</b>	<b>389,108,382</b>	<b>414,761,579</b>	<b>431,035,749</b>	<b>457,879,709</b>	<b>425,911,902</b>

\*Please note that 2019 Cargo is subject to change as updates are submitted by Airlines

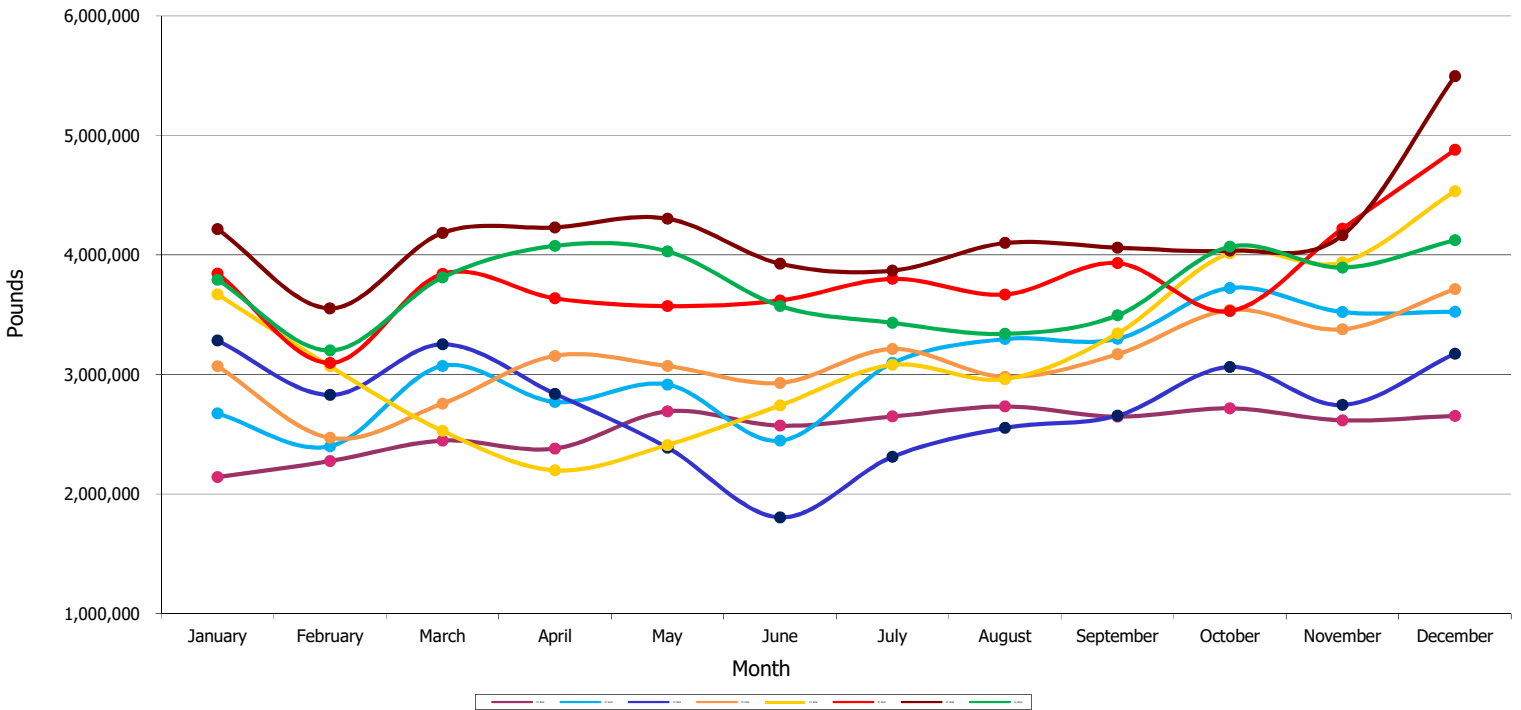




## Detroit Metropolitan Airport (DTW) Air Mail by Month (by Calendar Year)

Month	CY 2012	CY 2013	CY 2014	CY 2015	CY 2016	CY 2017	CY 2018	CY 2019*
January	2,141,364	2,674,103	3,283,248	3,069,862	3,670,900	3,844,667	4,215,302	3,792,117
February	2,275,285	2,399,399	2,828,531	2,469,639	3,068,871	3,096,463	3,553,470	3,200,953
March	2,446,868	3,072,133	3,252,225	2,756,103	2,527,878	3,841,616	4,184,731	3,812,061
April	2,380,570	2,770,560	2,837,913	3,155,722	2,198,229	3,636,592	4,230,861	4,076,091
May	2,691,110	2,915,319	2,388,271	3,070,381	2,409,954	3,572,675	4,303,507	4,029,559
June	2,571,460	2,445,893	1,804,137	2,929,573	2,741,129	3,619,244	3,927,013	3,572,819
July	2,648,455	3,096,112	2,311,505	3,213,243	3,080,897	3,800,377	3,869,056	3,431,534
August	2,732,700	3,295,963	2,552,547	2,979,932	2,961,116	3,669,188	4,099,666	3,339,934
September	2,647,135	3,298,273	2,655,477	3,169,113	3,343,002	3,932,281	4,061,829	3,494,048
October	2,716,634	3,723,637	3,063,452	3,539,168	4,014,072	3,530,113	4,035,586	4,069,028
November	2,616,519	3,522,486	2,744,639	3,377,769	3,938,445	4,219,780	4,164,882	3,894,231
December	2,653,810	3,525,107	3,174,146	3,714,685	4,532,722	4,878,786	5,496,080	4,122,765
<b>Total</b>	<b>30,521,910</b>	<b>36,738,985</b>	<b>32,896,091</b>	<b>37,445,190</b>	<b>38,487,215</b>	<b>45,641,782</b>	<b>50,141,983</b>	<b>44,835,140</b>

\*Please note that 2019 Cargo is subject to change as updates are submitted by Airlines



## Detroit Metropolitan Airport (DTW) Small Packages by Month (by Calendar Year)

Month	CY 2012	CY 2013	CY 2014	CY 2015	CY 2016	CY 2017	CY 2018	CY 2019*
January	10,582	3,382	2,183	93	232	423	434	560
February	11,870	4,328	3,817	1,950	191	764	347	463
March	10,072	1,805	3,147	428	241	787	701	623
April	5,043	1,010	195	541	169	466	500	695
May	12,658	619	1,965	88	268	845	318	783
June	7,374	1,101	2,037	412	347	222	436	971
July	4,565	567	1,081	343	374	95	336	696
August	7,969	627	962	604	256	455	539	1,253
September	5,427	1,230	1,161	197	1,225	602	421	1,031
October	4,796	916	160	549	3,555	600	989	1,108
November	6,046	2,018	823	655	1,532	657	349	487
December	2,977	3,488	406	567	2,220	744	1,244	383
<b>Total</b>	<b>89,379</b>	<b>21,091</b>	<b>17,937</b>	<b>6,427</b>	<b>10,610</b>	<b>6,660</b>	<b>6,614</b>	<b>9,053</b>

\*Please note that 2019 Cargo is subject to change as updates are submitted by Airlines

