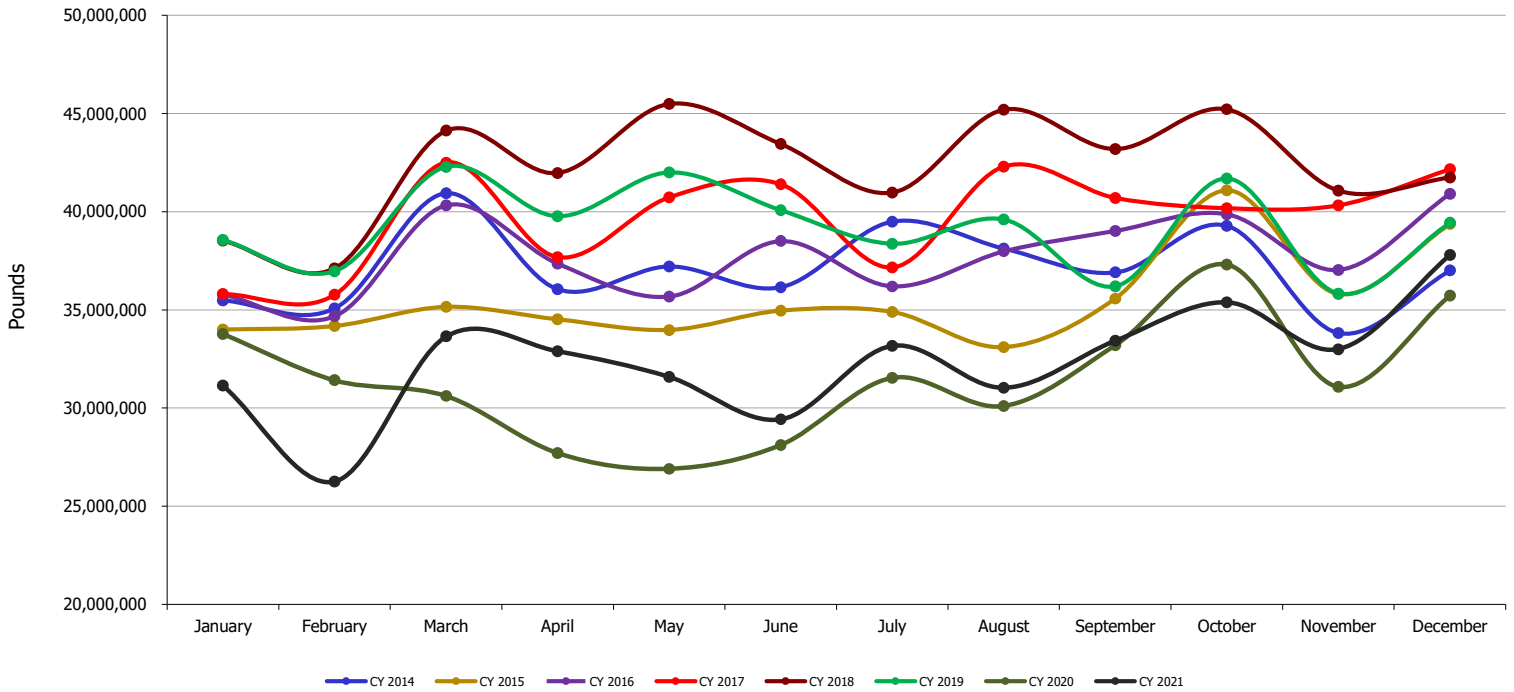




Detroit Metropolitan Airport (DTW) All Cargo by Month (by Calendar Year)

Month	CY 2014	CY 2015	CY 2016	CY 2017	CY 2018	CY 2019	CY 2020	CY 2021
January	35,484,480	33,989,100	35,768,423	35,800,745	38,526,466	38,560,543	33,774,029	31,141,739
February	35,065,700	34,179,069	34,669,592	35,764,180	37,112,258	36,956,055	31,410,326	26,249,029
March	40,936,886	35,145,120	40,323,849	42,498,175	44,126,968	42,286,160	30,610,666	33,642,134
April	36,043,756	34,509,772	37,353,444	37,678,272	41,963,269	39,760,871	27,705,254	32,887,694
May	37,199,997	33,973,568	35,668,509	40,727,213	45,485,208	41,995,285	26,897,157	31,581,273
June	36,146,038	34,957,283	38,500,692	41,403,026	43,445,544	40,075,584	28,110,971	29,419,858
July	39,486,728	34,885,455	36,189,962	37,155,839	40,967,276	38,367,749	31,533,578	33,166,442
August	38,124,165	33,097,454	37,976,981	42,300,232	45,187,776	39,605,227	30,091,768	31,020,745
September	36,900,963	35,572,180	39,008,934	40,699,442	43,185,545	36,200,586	33,196,913	33,418,488
October	39,277,347	41,084,182	39,865,844	40,177,644	45,218,899	41,689,380	37,297,035	35,379,422
November	33,815,586	35,800,186	37,028,391	40,320,190	41,068,999	35,830,379	31,074,655	32,993,811
December	36,998,396	39,366,630	40,904,783	42,159,233	41,740,098	39,428,276	35,729,121	37,800,104
Total	445,480,042	426,559,999	453,259,404	476,684,191	508,028,306	470,756,095	377,431,473	388,700,739

*Please note that 2021 Cargo is subject to change as updates are submitted by Airlines

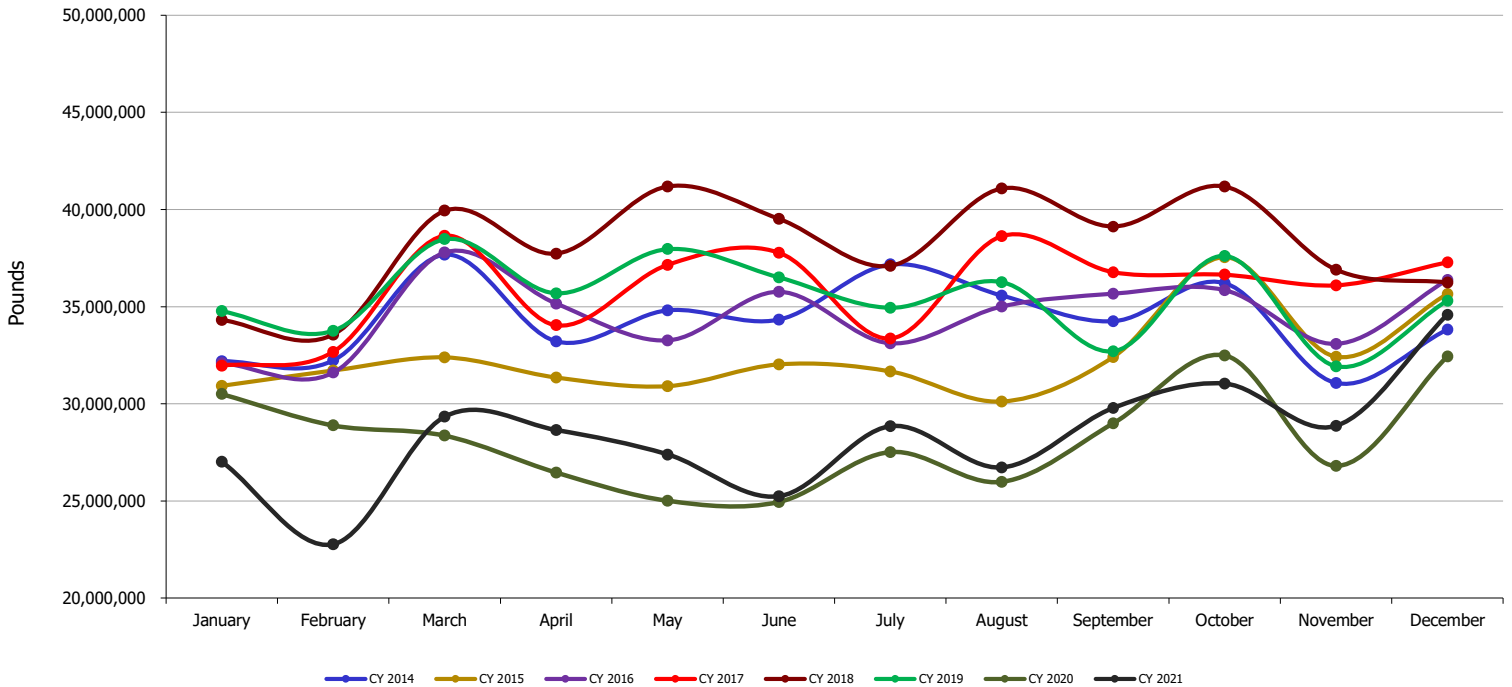




Detroit Metropolitan Airport (DTW) Air Freight By Month (by Calendar Year)

Month	CY 2014	CY 2015	CY 2016	CY 2017	CY 2018	CY 2019	CY 2020	CY 2021
January	32,199,049	30,919,145	32,097,291	31,955,655	34,310,730	34,767,866	30,500,303	27,014,044
February	32,233,352	31,707,480	31,600,530	32,666,953	33,558,441	33,754,639	28,887,735	22,766,089
March	37,681,514	32,388,589	37,795,730	38,655,772	39,941,536	38,473,476	28,361,683	29,340,535
April	33,205,648	31,353,509	35,155,046	34,041,214	37,731,908	35,684,085	26,458,077	28,648,407
May	34,809,761	30,903,099	33,258,287	37,153,693	41,181,383	37,964,943	25,005,707	27,392,778
June	34,339,864	32,027,298	35,759,216	37,783,560	39,518,095	36,501,794	24,950,942	25,238,688
July	37,174,142	31,671,869	33,108,691	33,355,367	37,097,884	34,935,519	27,513,195	28,849,564
August	35,570,656	30,116,918	35,015,609	38,630,589	41,087,571	36,264,040	25,980,300	26,728,304
September	34,244,325	32,402,870	35,664,707	36,766,559	39,123,295	32,705,507	28,991,607	29,782,105
October	36,213,735	37,544,465	35,848,217	36,646,931	41,182,324	37,619,244	32,487,950	31,040,593
November	31,070,124	32,421,762	33,088,414	36,099,753	36,903,768	31,935,661	26,803,870	28,862,921
December	33,823,844	35,651,378	36,369,841	37,279,703	36,242,774	35,305,128	32,432,090	34,589,435
Total	412,566,014	389,108,382	414,761,579	431,035,749	457,879,709	425,911,902	338,373,459	340,253,463

*Please note that 2021 Cargo is subject to change as updates are submitted by Airlines

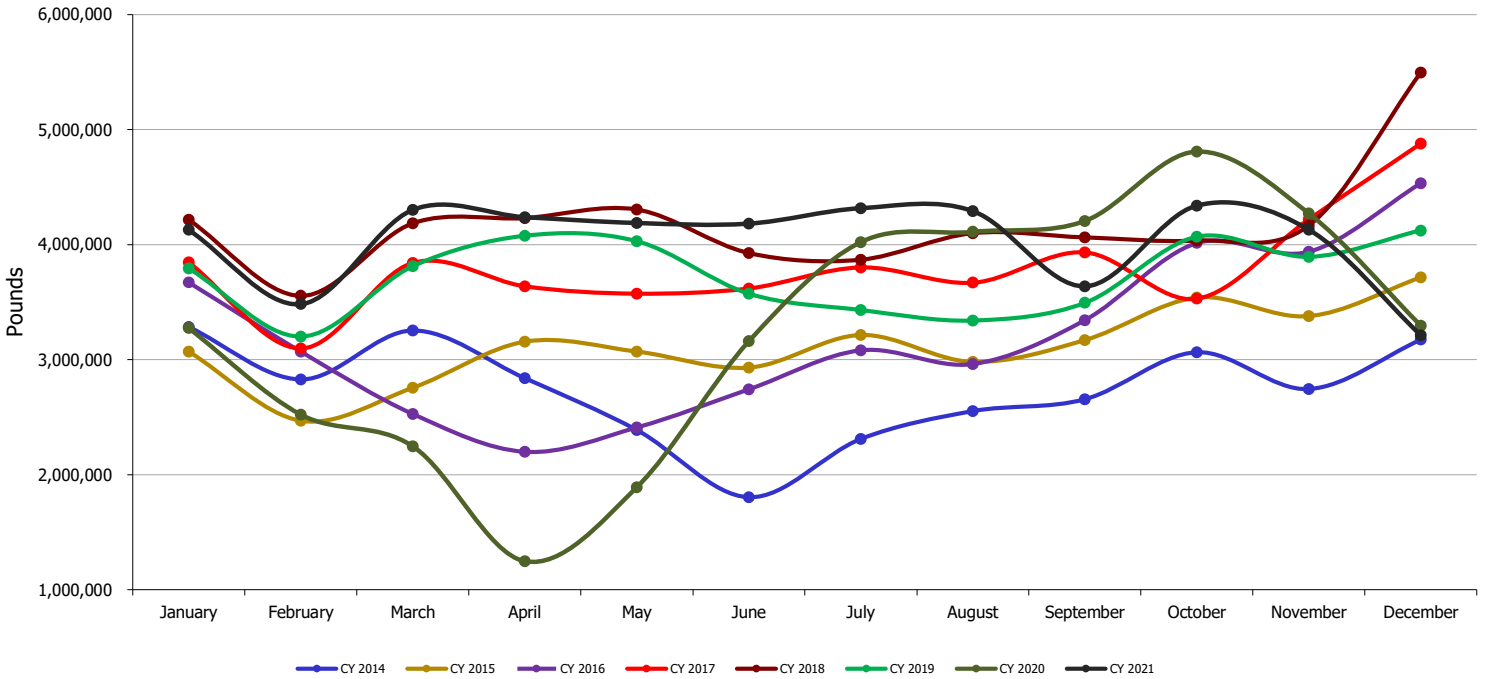




Detroit Metropolitan Airport (DTW) Air Mail by Month (by Calendar Year)

Month	CY 2014	CY 2015	CY 2016	CY 2017	CY 2018	CY 2019	CY 2020	CY 2021
January	3,283,248	3,069,862	3,670,900	3,844,667	4,215,302	3,792,117	3,273,493	4,127,695
February	2,828,531	2,469,639	3,068,871	3,096,463	3,553,470	3,200,953	2,522,384	3,482,718
March	3,252,225	2,756,103	2,527,878	3,841,616	4,184,731	3,812,061	2,248,122	4,301,569
April	2,837,913	3,155,722	2,198,229	3,636,592	4,230,861	4,076,091	1,247,133	4,239,105
May	2,388,271	3,070,381	2,409,954	3,572,675	4,303,507	4,029,559	1,891,450	4,187,712
June	1,804,137	2,929,573	2,741,129	3,619,244	3,927,013	3,572,819	3,160,029	4,181,107
July	2,311,505	3,213,243	3,080,897	3,800,377	3,869,056	3,431,534	4,020,383	4,316,614
August	2,552,547	2,979,932	2,961,116	3,669,188	4,099,666	3,339,934	4,111,468	4,291,786
September	2,655,477	3,169,113	3,343,002	3,932,281	4,061,829	3,494,048	4,205,274	3,635,998
October	3,063,452	3,539,168	4,014,072	3,530,113	4,035,586	4,069,028	4,808,683	4,338,556
November	2,744,639	3,377,769	3,938,445	4,219,780	4,164,882	3,894,231	4,270,686	4,129,411
December	3,174,146	3,714,685	4,532,722	4,878,786	5,496,080	4,122,765	3,296,574	3,210,533
Total	32,896,091	37,445,190	38,487,215	45,641,782	50,141,983	44,835,140	39,055,679	48,442,804

*Please note that 2021 Cargo is subject to change as updates are submitted by Airlines



Detroit Metropolitan Airport (DTW) Small Packages by Month (by Calendar Year)

Month	CY 2014	CY 2015	CY 2016	CY 2017	CY 2018	CY 2019	CY 2020	CY 2021
January	2,183	93	232	423	434	560	233	-
February	3,817	1,950	191	764	347	463	207	222
March	3,147	428	241	787	701	623	861	30
April	195	541	169	466	500	695	44	182
May	1,965	88	268	845	318	783	-	783
June	2,037	412	347	222	436	971	-	63
July	1,081	343	374	95	336	696	-	264
August	962	604	256	455	539	1,253	-	655
September	1,161	197	1,225	602	421	1,031	32	385
October	160	549	3,555	600	989	1,108	402	273
November	823	655	1,532	657	349	487	99	1,479
December	406	567	2,220	744	1,244	383	457	136
Total	17,937	6,427	10,610	6,660	6,614	9,053	2,335	4,472

*Please note that 2021 Cargo is subject to change as updates are submitted by Airlines

