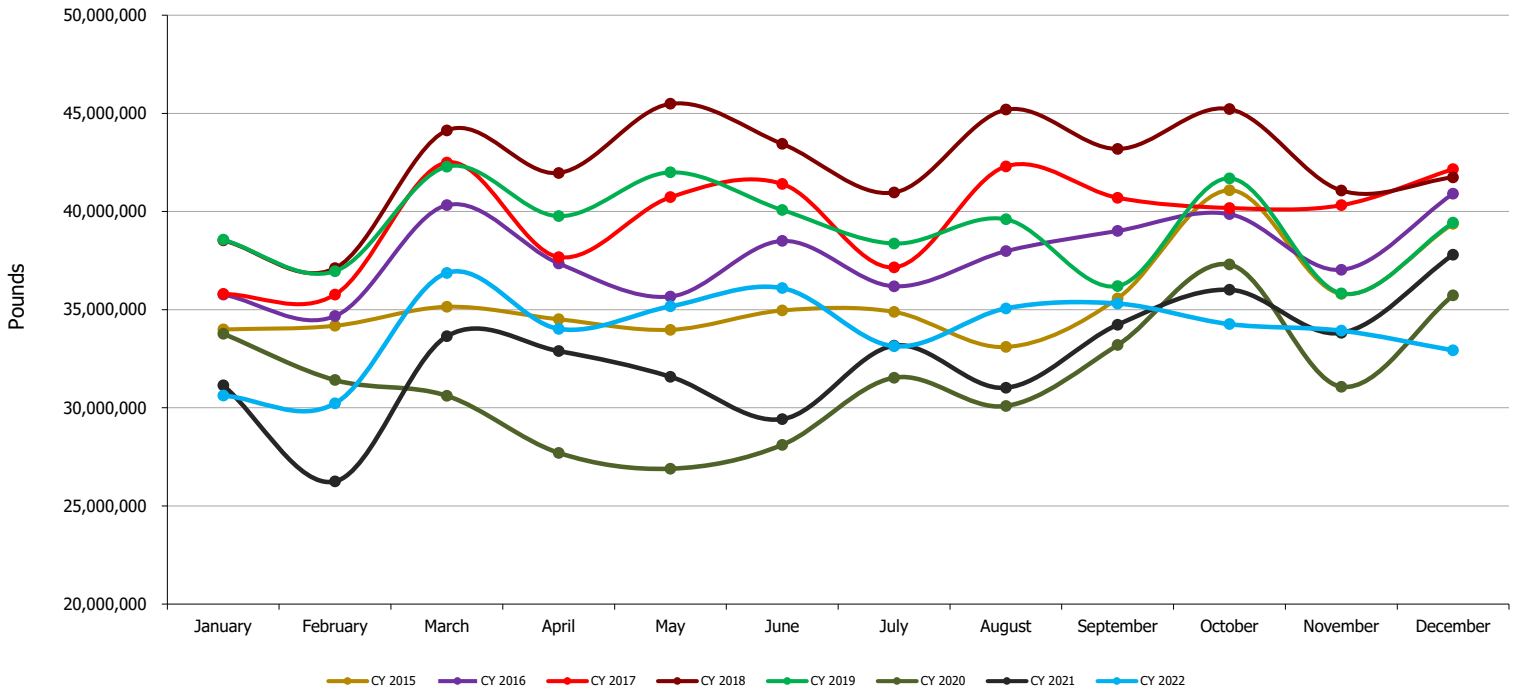


Detroit Metropolitan Airport (DTW) All Cargo by Month (by Calendar Year)

Month	CY 2015	CY 2016	CY 2017	CY 2018	CY 2019	CY 2020	CY 2021	CY 2022
January	33,989,100	35,768,423	35,800,745	38,526,466	38,560,543	33,774,029	31,141,739	30,619,540
February	34,179,069	34,669,592	35,764,180	37,112,258	36,956,055	31,410,326	26,249,029	30,223,164
March	35,145,120	40,323,849	42,498,175	44,126,968	42,286,160	30,610,666	33,642,134	36,872,004
April	34,509,772	37,353,444	37,678,272	41,963,269	39,760,871	27,705,254	32,887,694	34,020,143
May	33,973,568	35,668,509	40,727,213	45,485,208	41,995,285	26,897,157	31,581,273	35,166,650
June	34,957,283	38,500,692	41,403,026	43,445,544	40,075,584	28,110,971	29,419,858	36,096,352
July	34,885,455	36,189,962	37,155,839	40,967,276	38,367,749	31,533,578	33,166,442	33,136,104
August	33,097,454	37,976,981	42,300,232	45,187,776	39,605,227	30,091,768	31,020,745	35,062,534
September	35,572,180	39,008,934	40,699,442	43,185,545	36,200,586	33,196,913	34,234,073	35,309,778
October	41,084,182	39,865,844	40,177,644	45,218,899	41,689,380	37,297,035	36,013,626	34,261,685
November	35,800,186	37,028,391	40,320,190	41,068,999	35,830,379	31,074,655	33,815,768	33,926,719
December	39,366,630	40,904,783	42,159,233	41,740,098	39,428,276	35,729,121	37,800,104	32,925,982
Total	426,559,999	453,259,404	476,684,191	508,028,306	470,756,095	377,431,473	390,972,485	407,620,655

*Please note that 2022 Cargo is subject to change as updates are submitted by Airlines

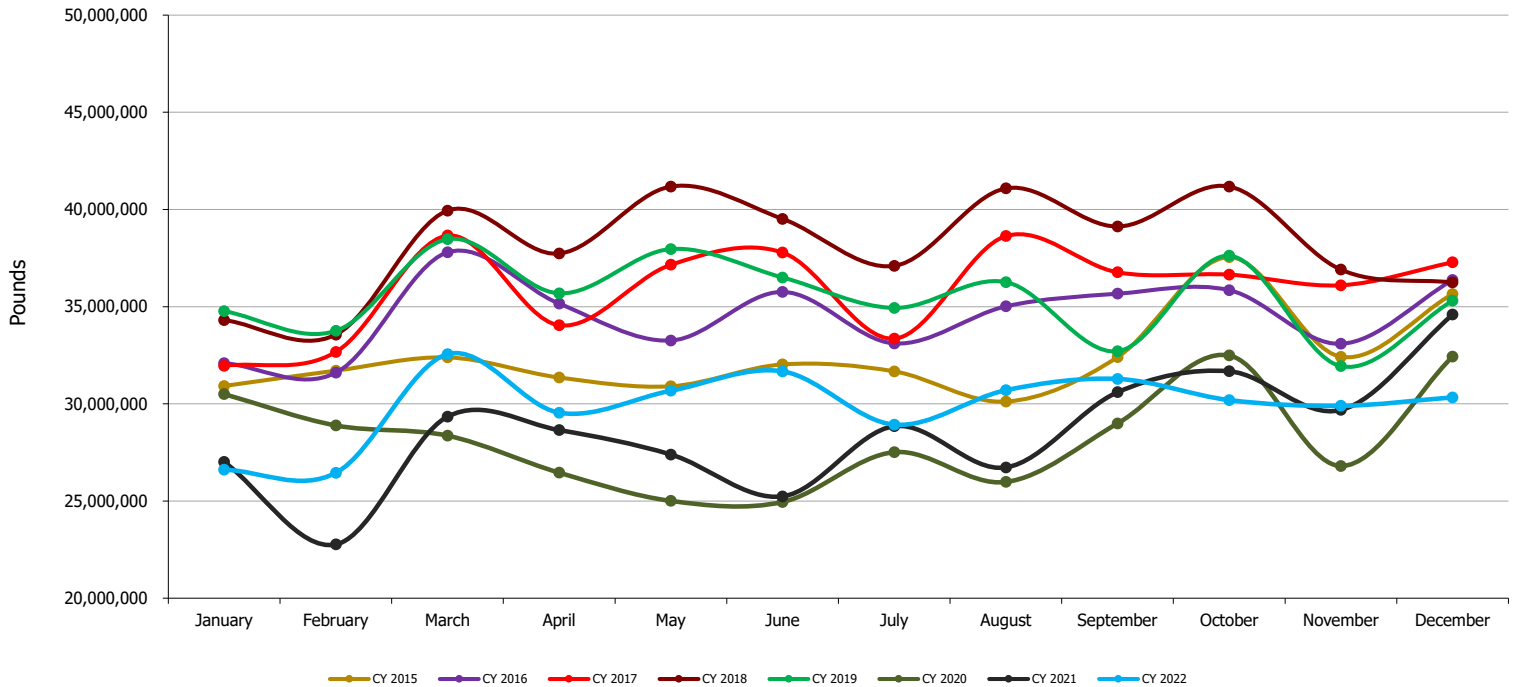




Detroit Metropolitan Airport (DTW) Air Freight By Month (by Calendar Year)

Month	CY 2015	CY 2016	CY 2017	CY 2018	CY 2019	CY 2020	CY 2021	CY 2022
January	30,919,145	32,097,291	31,955,655	34,310,730	34,767,866	30,500,303	27,014,044	26,611,597
February	31,707,480	31,600,530	32,666,953	33,558,441	33,754,639	28,887,735	22,766,089	26,449,849
March	32,388,589	37,795,730	38,655,772	39,941,536	38,473,476	28,361,683	29,340,535	32,556,205
April	31,353,509	35,155,046	34,041,214	37,731,908	35,684,085	26,458,077	28,648,407	29,543,491
May	30,903,099	33,258,287	37,153,693	41,181,383	37,964,943	25,005,707	27,392,778	30,673,625
June	32,027,298	35,759,216	37,783,560	39,518,095	36,501,794	24,950,942	25,238,688	31,671,656
July	31,671,869	33,108,691	33,355,367	37,097,884	34,935,519	27,513,195	28,849,564	28,930,437
August	30,116,918	35,015,609	38,630,589	41,087,571	36,264,040	25,980,300	26,728,304	30,700,767
September	32,402,870	35,664,707	36,766,559	39,123,295	32,705,507	28,991,607	30,597,690	31,281,880
October	37,544,465	35,848,217	36,646,931	41,182,324	37,619,244	32,487,950	31,674,797	30,192,885
November	32,421,762	33,088,414	36,099,753	36,903,768	31,935,661	26,803,870	29,684,878	29,896,512
December	35,651,378	36,369,841	37,279,703	36,242,774	35,305,128	32,432,090	34,589,435	30,332,313
Total	389,108,382	414,761,579	431,035,749	457,879,709	425,911,902	338,373,459	342,525,209	358,841,217

*Please note that 2022 Cargo is subject to change as updates are submitted by Airlines

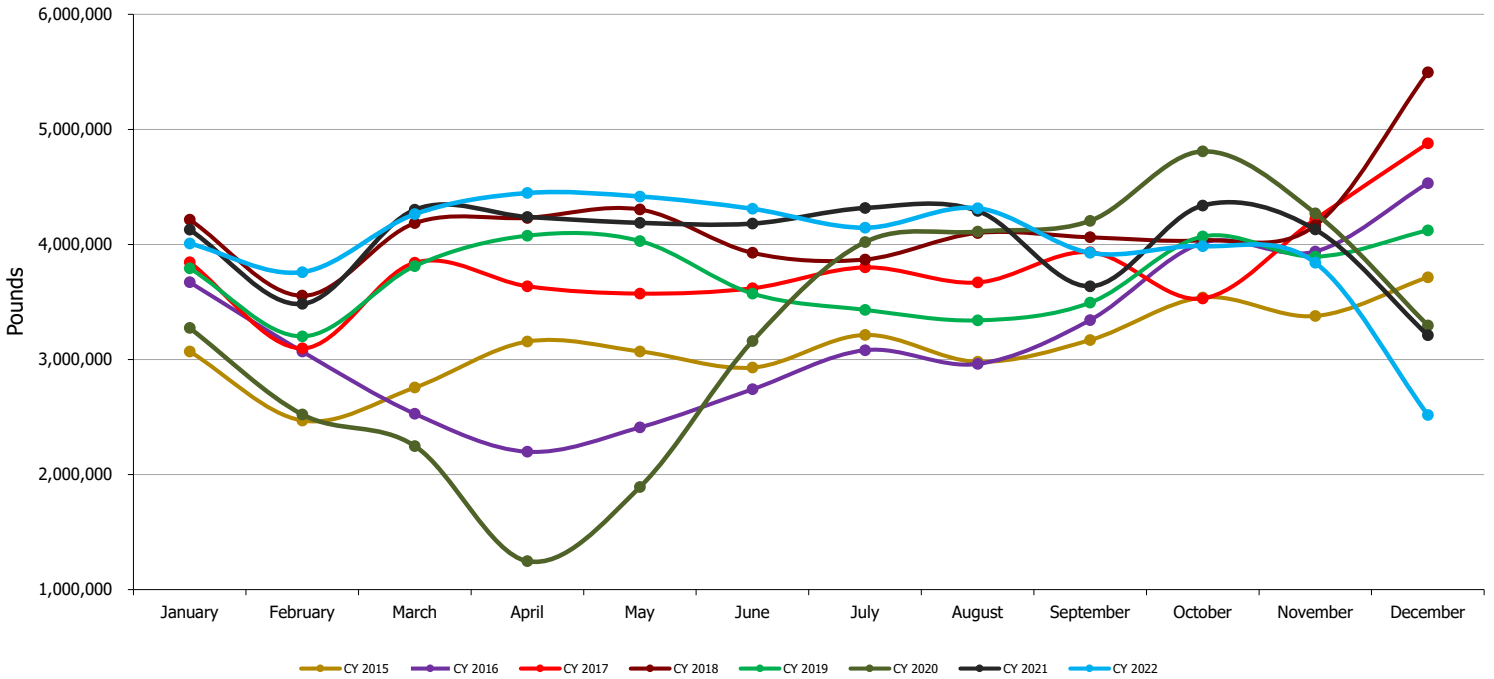




Detroit Metropolitan Airport (DTW) Air Mail by Month (by Calendar Year)

Month	CY 2015	CY 2016	CY 2017	CY 2018	CY 2019	CY 2020	CY 2021	CY 2022
January	3,069,862	3,670,900	3,844,667	4,215,302	3,792,117	3,273,493	4,127,695	4,007,626
February	2,469,639	3,068,871	3,096,463	3,553,470	3,200,953	2,522,384	3,482,718	3,759,364
March	2,756,103	2,527,878	3,841,616	4,184,731	3,812,061	2,248,122	4,301,569	4,263,283
April	3,155,722	2,198,229	3,636,592	4,230,861	4,076,091	1,247,133	4,239,105	4,446,612
May	3,070,381	2,409,954	3,572,675	4,303,507	4,029,559	1,891,450	4,187,712	4,416,780
June	2,929,573	2,741,129	3,619,244	3,927,013	3,572,819	3,160,029	4,181,107	4,309,552
July	3,213,243	3,080,897	3,800,377	3,869,056	3,431,534	4,020,383	4,316,614	4,145,097
August	2,979,932	2,961,116	3,669,188	4,099,666	3,339,934	4,111,468	4,291,786	4,315,215
September	3,169,113	3,343,002	3,932,281	4,061,829	3,494,048	4,205,274	3,635,998	3,926,602
October	3,539,168	4,014,072	3,530,113	4,035,586	4,069,028	4,808,683	4,338,556	3,985,603
November	3,377,769	3,938,445	4,219,780	4,164,882	3,894,231	4,270,686	4,129,411	3,840,674
December	3,714,685	4,532,722	4,878,786	5,496,080	4,122,765	3,296,574	3,210,533	2,518,546
Total	37,445,190	38,487,215	45,641,782	50,141,983	44,835,140	39,055,679	48,442,804	47,934,954

*Please note that 2022 Cargo is subject to change as updates are submitted by Airlines



Detroit Metropolitan Airport (DTW) Small Packages by Month (by Calendar Year)

Month	CY 2015	CY 2016	CY 2017	CY 2018	CY 2019	CY 2020	CY 2021	CY 2022
January	93	232	423	434	560	233	-	317
February	1,950	191	764	347	463	207	222	13,951
March	428	241	787	701	623	861	30	52,516
April	541	169	466	500	695	44	182	30,040
May	88	268	845	318	783	-	783	76,245
June	412	347	222	436	971	-	63	115,144
July	343	374	95	336	696	-	264	60,570
August	604	256	455	539	1,253	-	655	46,552
September	197	1,225	602	421	1,031	32	385	101,296
October	549	3,555	600	989	1,108	402	273	83,197
November	655	1,532	657	349	487	99	1,479	189,533
December	567	2,220	744	1,244	383	457	136	75,123
Total	6,427	10,610	6,660	6,614	9,053	2,335	4,472	844,484

*Please note that 2022 Cargo is subject to change as updates are submitted by Airlines
 *As of February 2022, Royal Jordanian began reporting on small packages instead of air freight

