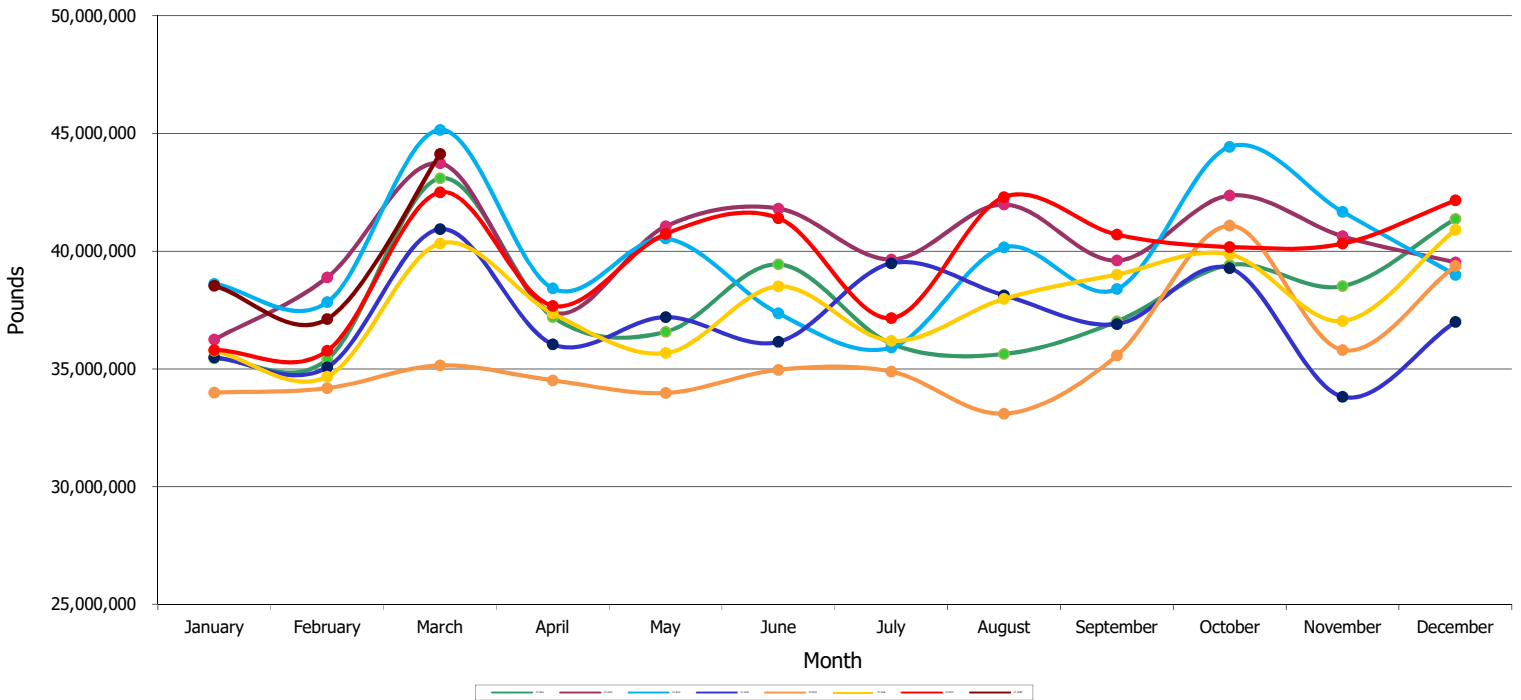




Detroit Metropolitan Airport (DTW) All Cargo by Month (by Calendar Year)

Month	CY 2011	CY 2012	CY 2013	CY 2014	CY 2015	CY 2016	CY 2017	CY 2018*
January	35,441,281	36,238,935	38,609,312	35,484,480	33,989,100	35,768,423	35,800,745	38,526,466
February	35,398,884	38,881,476	37,830,461	35,065,700	34,179,069	34,669,592	35,764,180	37,112,258
March	43,095,590	43,731,393	45,150,864	40,936,886	35,145,120	40,323,849	42,498,175	44,126,968
April	37,201,421	37,385,958	38,416,570	36,043,756	34,509,772	37,353,444	37,678,272	
May	36,570,314	41,053,118	40,535,579	37,199,997	33,973,568	35,668,509	40,727,213	
June	39,439,824	41,810,399	37,353,758	36,146,038	34,957,283	38,500,692	41,403,026	
July	36,069,786	39,646,175	35,906,722	39,486,728	34,885,455	36,189,962	37,155,839	
August	35,632,987	41,987,336	40,161,069	38,124,165	33,097,454	37,976,981	42,300,232	
September	37,014,036	39,598,325	38,389,115	36,900,963	35,572,180	39,008,934	40,699,442	
October	39,416,102	42,364,431	44,433,872	39,277,347	41,084,182	39,865,844	40,177,644	
November	38,513,668	40,633,169	41,673,878	33,815,586	35,800,186	37,028,391	40,320,190	
December	41,375,777	39,523,647	38,992,837	36,998,396	39,366,630	40,904,783	42,159,233	
Total	455,169,670	482,854,362	477,454,037	445,480,042	426,559,999	453,259,404	476,684,191	119,765,692

*Please note that 2018 Cargo is subject to change as updates are submitted by Airlines

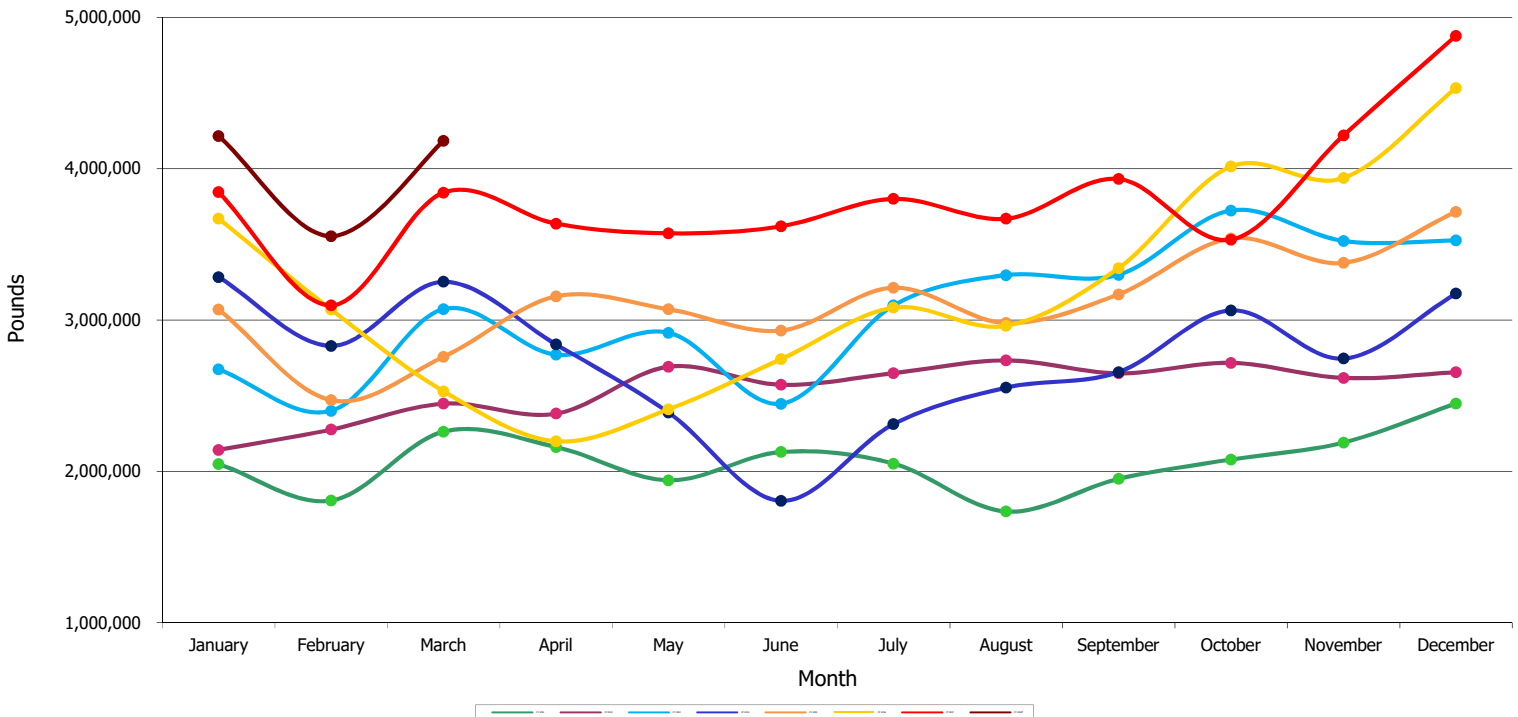




Detroit Metropolitan Airport (DTW) Air Mail by Month (by Calendar Year)

Month	CY 2011	CY 2012	CY 2013	CY 2014	CY 2015	CY 2016	CY 2017	CY 2018*
January	2,047,422	2,141,364	2,674,103	3,283,248	3,069,862	3,670,900	3,844,667	4,215,302
February	1,806,012	2,275,285	2,399,399	2,828,531	2,469,639	3,068,871	3,096,463	3,553,470
March	2,261,975	2,446,868	3,072,133	3,252,225	2,756,103	2,527,878	3,841,616	4,184,731
April	2,159,833	2,380,570	2,770,560	2,837,913	3,155,722	2,198,229	3,636,592	
May	1,940,550	2,691,110	2,915,319	2,388,271	3,070,381	2,409,954	3,572,675	
June	2,126,795	2,571,460	2,445,893	1,804,137	2,929,573	2,741,129	3,619,244	
July	2,050,345	2,648,455	3,096,112	2,311,505	3,213,243	3,080,897	3,800,377	
August	1,733,867	2,732,700	3,295,963	2,552,547	2,979,932	2,961,116	3,669,188	
September	1,949,529	2,647,135	3,298,273	2,655,477	3,169,113	3,343,002	3,932,281	
October	2,077,154	2,716,634	3,723,637	3,063,452	3,539,168	4,014,072	3,530,113	
November	2,189,291	2,616,519	3,522,486	2,744,639	3,377,769	3,938,445	4,219,780	
December	2,448,027	2,653,810	3,525,107	3,174,146	3,714,685	4,532,722	4,878,786	
Total	24,790,800	30,521,910	36,738,985	32,896,091	37,445,190	38,487,215	45,641,782	11,953,503

*Please note that 2018 Cargo is subject to change as updates are submitted by Airlines





Detroit Metropolitan Airport (DTW) Small Packages by Month (by Calendar Year)

Month	CY 2011	CY 2012	CY 2013	CY 2014	CY 2015	CY 2016	CY 2017	CY 2018*
January	17,086	10,582	3,382	2,183	93	232	423	434
February	11,148	11,870	4,328	3,817	1,950	191	764	347
March	14,583	10,072	1,805	3,147	428	241	787	701
April	15,547	5,043	1,010	195	541	169	466	
May	19,981	12,658	619	1,965	88	268	845	
June	18,021	7,374	1,101	2,037	412	347	222	
July	12,369	4,565	567	1,081	343	374	95	
August	17,095	7,969	627	962	604	256	455	
September	19,379	5,427	1,230	1,161	197	1,225	602	
October	23,142	4,796	916	160	549	3,555	600	
November	19,448	6,046	2,018	823	655	1,532	657	
December	19,394	2,977	3,488	406	567	2,220	744	
Total	207,193	89,379	21,091	17,937	6,427	10,610	6,660	1,482

*Please note that 2018 Cargo is subject to change as updates are submitted by Airlines

