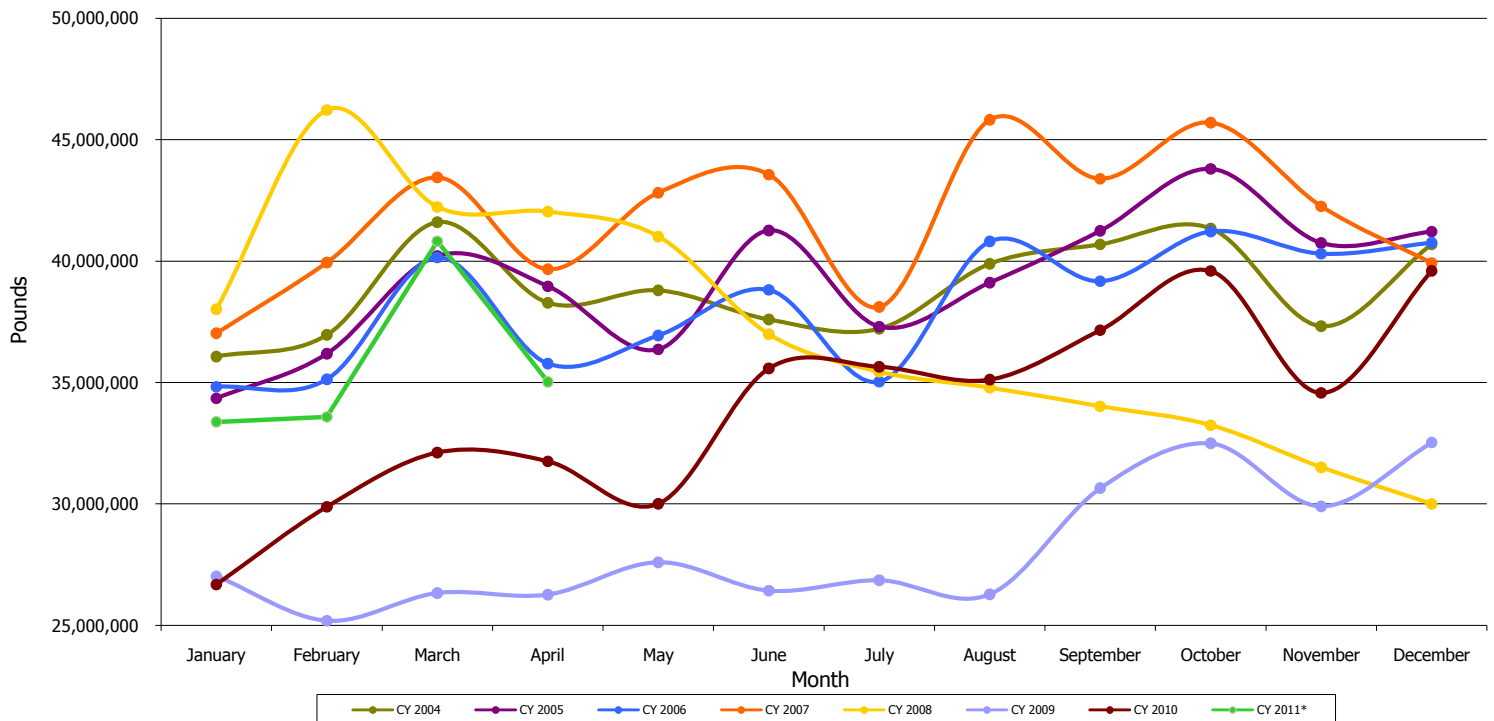


Detroit Metropolitan Airport (DTW) Air Freight By Month (by Calendar Year)

Month	CY 2004	CY 2005	CY 2006	CY 2007	CY 2008	CY 2009	CY 2010	CY 2011*
January	36,070,565	34,349,299	34,823,294	37,029,209	38,016,259	27,021,182	26,677,264	33,376,773
February	36,962,126	36,187,610	35,132,419	39,941,456	46,223,196	25,183,595	29,879,447	33,581,724
March	41,603,001	40,211,537	40,147,183	43,446,223	42,228,734	26,326,130	32,113,030	40,819,032
April	38,282,362	38,963,556	35,776,572	39,663,346	42,037,048	26,262,544	31,750,756	35,026,041
May	38,794,685	36,364,012	36,939,696	42,819,363	41,013,424	27,593,011	30,002,824	-
June	37,593,788	41,264,221	38,813,548	43,562,574	36,988,462	26,421,558	35,578,732	-
July	37,216,794	37,297,214	35,034,862	38,107,591	35,437,957	26,850,729	35,647,244	-
August	39,888,262	39,112,383	40,810,540	45,818,884	34,785,707	26,272,987	35,116,994	-
September	40,688,179	41,244,591	39,170,307	43,389,747	34,016,949	30,647,293	37,156,197	-
October	41,341,864	43,796,175	41,223,813	45,702,838	33,239,538	32,493,390	39,591,879	-
November	37,317,232	40,744,786	40,307,050	42,255,011	31,505,311	29,898,469	34,568,032	-
December	40,693,522	41,213,759	40,760,567	39,917,063	29,999,672	32,525,389	39,602,657	-
Total	466,452,380	470,749,143	458,939,851	501,653,305	445,492,257	337,496,277	407,685,056	142,803,570

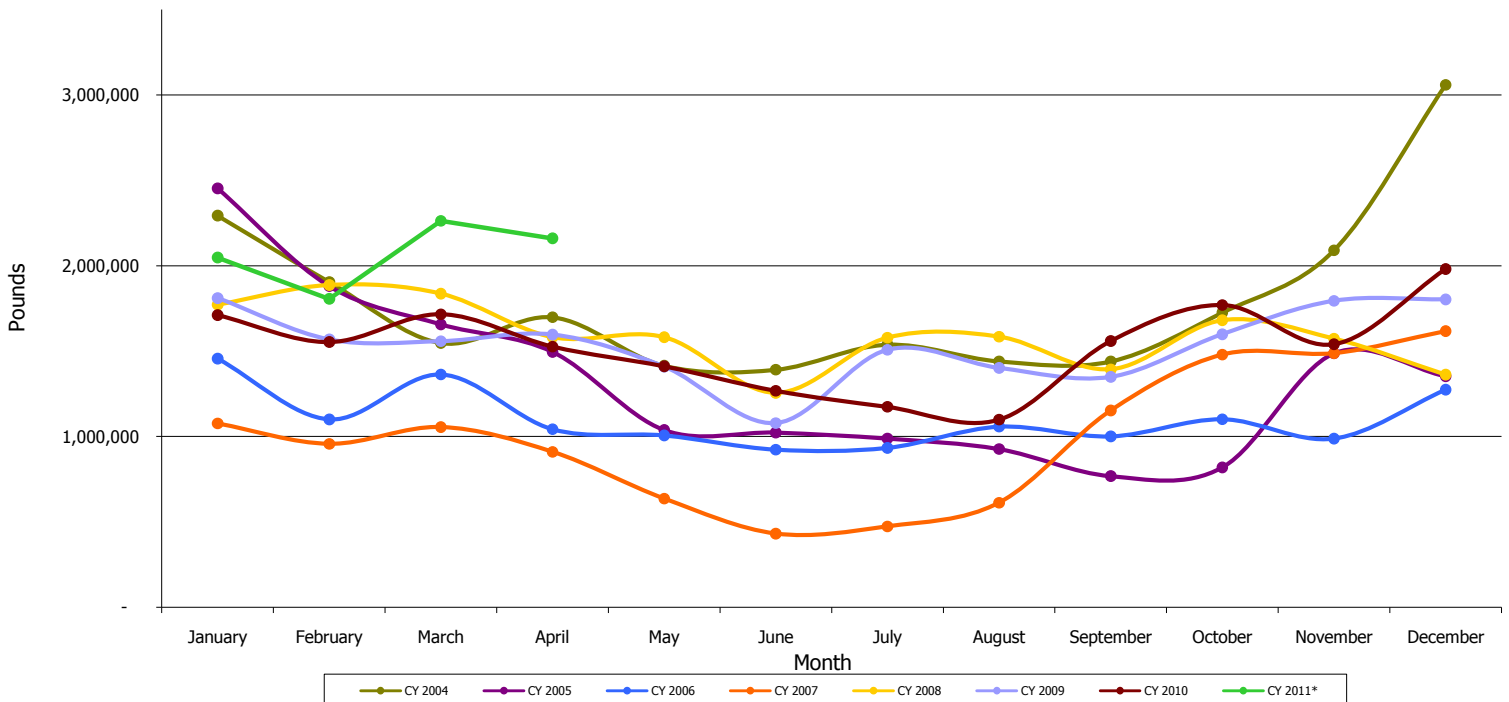
*Please note that 2011 Cargo is subject to change as updates are submitted by Airlines



Detroit Metropolitan Airport (DTW) Air Mail by Month (by Calendar Year)

Month	CY 2004	CY 2005	CY 2006	CY 2007	CY 2008	CY 2009	CY 2010	CY 2011*
January	2,292,946	2,453,071	1,455,839	1,075,629	1,771,486	1,810,155	1,710,110	2,047,422
February	1,904,664	1,879,834	1,099,871	956,575	1,886,992	1,567,580	1,552,743	1,806,012
March	1,547,212	1,656,546	1,362,926	1,054,702	1,836,226	1,557,270	1,715,560	2,261,975
April	1,698,035	1,495,222	1,041,884	909,694	1,580,947	1,596,171	1,525,848	2,159,833
May	1,413,937	1,037,796	1,005,580	635,834	1,581,057	1,408,641	1,410,454	-
June	1,390,789	1,022,883	922,323	430,615	1,254,783	1,078,092	1,266,925	-
July	1,537,787	987,671	932,601	473,018	1,578,212	1,506,933	1,173,071	-
August	1,439,939	926,131	1,056,961	611,727	1,584,129	1,400,969	1,098,295	-
September	1,439,464	767,533	1,000,069	1,151,750	1,393,135	1,348,362	1,558,331	-
October	1,725,229	818,782	1,100,528	1,479,203	1,680,406	1,598,325	1,769,483	-
November	2,090,065	1,486,321	987,245	1,487,570	1,572,647	1,793,734	1,539,509	-
December	3,058,873	1,352,654	1,273,848	1,616,581	1,361,531	1,802,196	1,979,985	-
Total	21,538,940	15,884,444	13,239,675	11,882,898	19,081,551	18,468,428	18,300,314	8,275,242

*Please note that 2011 Cargo is subject to change as updates are submitted by Airlines



Detroit Metropolitan Airport (DTW) Small Packages by Month (by Calendar Year)

Month	CY 2004	CY 2005	CY 2006	CY 2007	CY 2008	CY 2009	CY 2010	CY 2011*
January	55,028	57,012	26,687	19,749	18,802	24,678	77,049	17,086
February	68,558	45,265	35,147	15,168	27,206	24,089	19,175	11,148
March	57,152	84,124	31,231	34,306	24,705	28,611	17,400	14,583
April	116,510	53,990	19,064	20,656	31,099	74,897	18,227	15,547
May	80,186	38,272	42,679	31,593	26,525	68,796	23,169	-
June	70,575	38,792	32,332	30,814	34,561	36,656	27,779	-
July	59,145	29,018	18,647	32,282	38,271	92,701	22,787	-
August	63,256	42,705	15,248	34,033	42,762	84,941	27,974	-
September	76,889	37,671	34,554	29,573	33,230	87,644	29,661	-
October	77,331	36,610	22,266	22,154	31,664	131,645	27,505	-
November	59,787	27,190	21,089	15,123	23,226	100,772	22,201	-
December	53,346	25,474	43,699	20,320	26,736	238,333	25,789	-
Total	837,763	516,123	342,643	305,771	358,787	993,763	338,716	58,364

*Please note that 2011 Cargo is subject to change as updates are submitted by Airlines

